

Kingspan Environmental Service

National Wastewater Service & Maintenance Partnership

**NATIONAL
NETWORK**



Sustainable, Reliable, Affordable



Welcome to Kingspan Environmental Service

Who we are

Kingspan Environmental Service is part of the Kingspan Environmental & Renewables division of the Kingspan Group PLC – a global supplier of sustainable construction products.

Originally created as a dedicated service operation to support the company's wastewater products, Kingspan Environmental Service is now entrusted by building owners, managers and facilities engineers to look after the operation of wastewater equipment (of all makes and model) at over 20,000 locations throughout UK and Ireland.

Wastewater product specialists

We specialise in packaged pump systems, oil / water interceptors, grease traps, sewage treatment plants and rainwater harvesting systems. We offer a range of services on these systems and your drainage needs.

- *Scheduled preventative maintenance*
- *One number – 24 hour manned contact*
- *Emergency breakdown 4 hour on-site response*
- *Tankering (including emergency response) and disposal*
- *Drain inspections, jetting and reports*
- *Sampling and compliance*
- *Telemetry for remote monitoring and alerts*
- *Comprehensive range of parts for all manufactured products*
- *Safety checks*
- *Product and system training*

One supplier – multiple capabilities





Rapid professional response

National Network contracted customers can benefit from a high priority emergency call-out service 24 hours a day, 7 days a week, 365 days a year.

Our regional Network Partners, strategically located around the UK offer years of experience installing, servicing and maintaining wastewater equipment.

Their response teams are guaranteed to be at your location, within 4 hours* – tackling your emergency and restoring normal operation.

**Excluding some areas of the Scottish Highlands and Islands.*

Keeping you informed

We understand that effective communication with our customers is a pre-requisite in order to deliver a valuable service partnership.

To achieve this, our operating procedures and account management structure is geared towards giving our customers the most comprehensive and current reports – detailing exactly the current status of their wastewater assets.

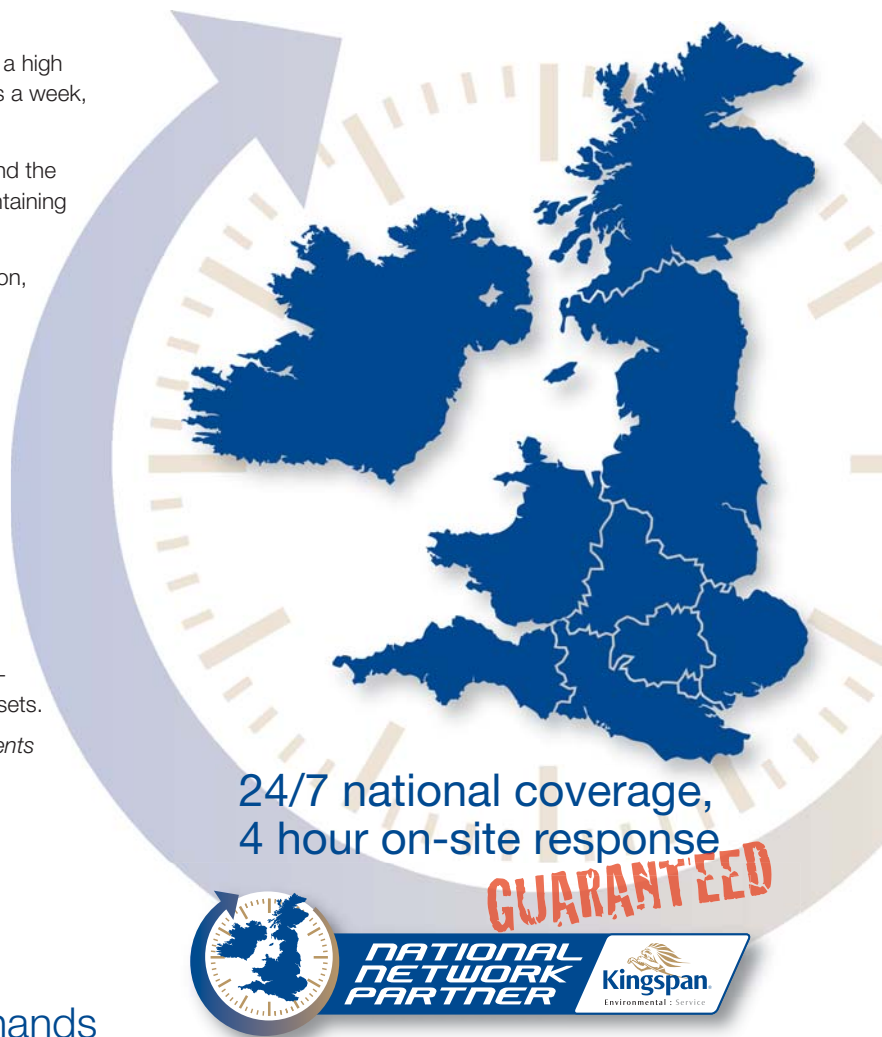
- Clear and precise contracts with service level agreements
- Tailored quotes – demonstrating value for money
- Site visit scheduling confirmation
- One number – 24 hour manned contact
- Engineering / tankering reports provided on-site and confirmed with invoice within 24 hours
- Feedback – customer surveys, meetings, KPI reports

Your wastewater assets in safe hands

A National Network tailored contract offers customers the option of transferring the management of their businesses' waste water systems to the leading wastewater service organisation.

Kingspan Environmental Service will completely manage the coordination and delivery of the service, maintenance and replacement of all your waste water assets; a complete 'cradle to grave' solution for installations across the country – delivering significant operational and financial risk reduction for clients.

Why not contact us to find out how we can help your business?



**24/7 national coverage,
4 hour on-site response**

GUARANTEED

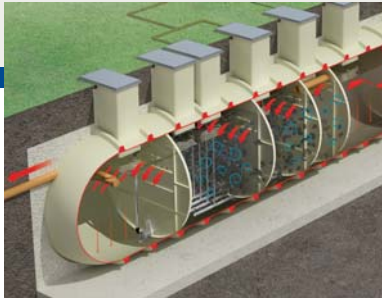


**NATIONAL
NETWORK
PARTNER**

Kingspan
Environmental Service

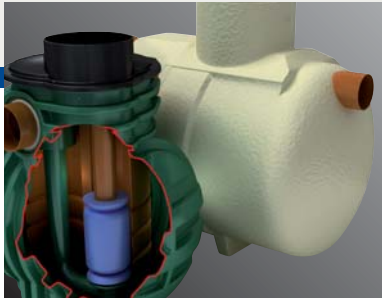
- Brig Environmental
- R.A. Dalton
- Maygothling Waste
- NGJ Construction
- Binder
- Alro Services
- A. Weatherhead Drainage

0844 65 65 65 8



Sewage Treatment Plants & Septic Tanks

- Site Assessment and legislative co-ordination
- Product sizing, supply and upgrade
- Bespoke design and manufacture
- Installation and commissioning
- Service, maintenance and tankering
- Discharge monitoring and environmental compliance



Oil Separators & Stormwater Attenuation

Oil Separators

- Flow-rate sizing and unit selection - Class 1 and Class 2 units
- Servicing, maintenance and oil residue disposal
- Environment Agency PPG3 compliance
- Alarm systems and remote monitoring

Stormwater Attenuation

- Inspection and performance monitoring
- Confined area maintenance



Sewage & Stormwater Pumping Systems

- Design, installation and commissioning
- Manufacture to engineering specifications
- Operational monitoring and maintenance
- Pump replacement
- Debris and ragging removal



Rainwater Harvesting, Grease & Silt Traps

Rainwater Harvesting

- Tailored specification and manufacture
- Installation and commissioning
- Filter and UV tube cleaning and replacement
- Pump and booster operation
- Full system telemetry

Grease and Silt Traps

- Scheduled inspections
- Grease and silt removal and disposal

Issue No. 1: March 2011



Kingspan Environmental Service

West Portway, Andover,
Hampshire SP10 3LF

Unit 1, Off Derryboy Road,
Carnbane Business Park,
Newry, Co. Down BT35 6QH

College Road North,
Aston Clinton, Aylesbury,
Buckinghamshire HP22 5EW

Elmtree House, Oldwalls,
Swansea SA3 1HA

0844 65 65 65 8

email: info@kingspanenvservice.com

Visit our website www.kingspanenvservice.com, or our company website www.kingspanenv.com

